



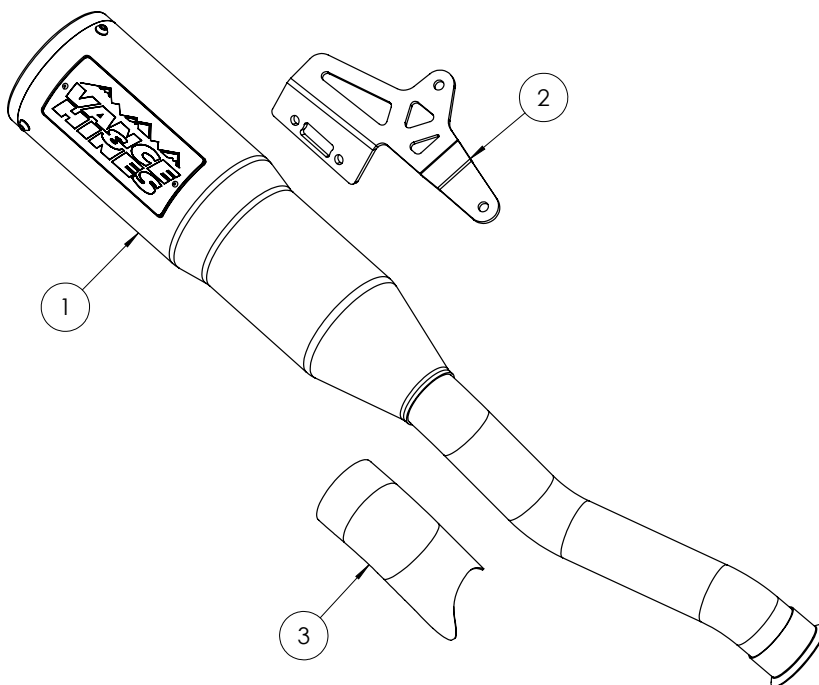
INSTALLATION INSTRUCTIONS:
STAINLESS ADVENTURE HI-OUTPUT 450 SLIP-ON
KTM 790/890 ADVENTURE, HUSQVARNA NORDEN 901
PART# 17415

READ ALL INSTRUCTIONS BEFORE BEGINNING INSTALLATION

Congratulations, you have purchased the finest exhaust system available for your motorcycle. Your Vance & Hines exhaust is designed and crafted for performance, quality, and style. Please follow the instructions below, check exhaust system for missing or damaged parts and if you need any assistance please contact our technical support line (562) 921-7461.

Fits 2019-2023 KTM 790 / 890 Adventure and Husqvarna Norden 901 Models

Qualified Manufacturer Declared Replacement Part for 2019-2023 KTM 790 / 890 Adventure and Husqvarna Norden 901 Models.

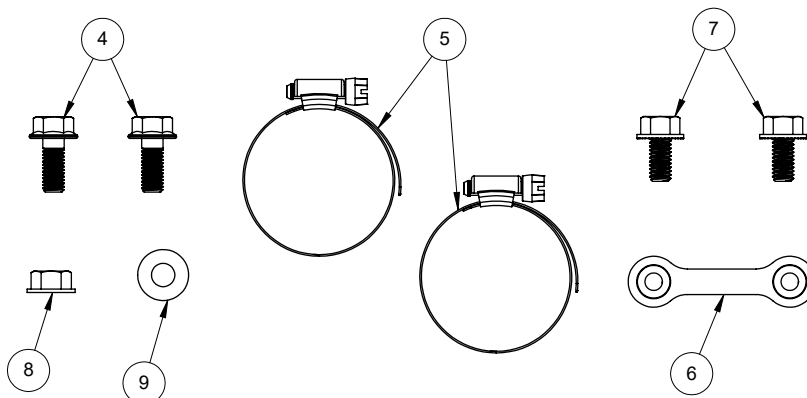


PARTS LIST

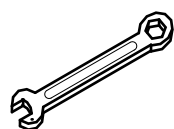
ITEM NO.	PART NO.	Description	Qty.
1	K445RB-S	Muffler Can Assembly	1
2	1345-P	Mount Bracket	1
3	K445HP	Heat Shield	1
4	A361HW	M8X1.25X20mm	2
5	A272HW	No. 28 Hose Clamp	2
6	A195HW	Dog Bone Nut Plate	1

ITEM NO.	PART NO.	Description	Qty.
7	A240HW	5/16"-18 X 5/8" FB	2
8	A852HW	M8 Black Flange Nut	1
9	A310HW	M8 Washer	1

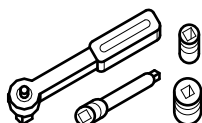
HARDWARE



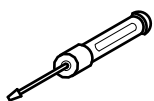
TOOLS REQUIRED



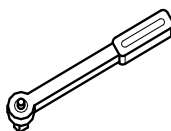
Combination Wrench:
1/2", 10mm, 12mm,
13mm



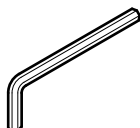
3/8" Drive Ratchet w/ 4" extension, 1/2", 10mm, 12mm, 13mm Sockets



#2 Philips Screwdriver



Ft-lb Torque Wrench



4mm, 6mm Allen Wrench

REMOVAL OF STOCK EXHAUST

1. Loosen and remove the stock exhaust clamp connecting the muffler inlet to the exhaust pre-chamber outlet. NOTE: Set aside stock exhaust clamp as it will be re-used with the Vance and Hines Hi-Output Adventure slip-on.
2. Remove the muffler mount bolt holding the stock muffler to the frame and remove the stock muffler.
3. Inspect the stock exhaust gasket for damage and replace if necessary. The stock exhaust gasket will be re-used during installation of the Vance and Hines Hi-Output Adventure Slip-on.

VANCE & HINES EXHAUST INSTALLATION

1. Install the 1345-P bracket to the K445RB-S muffler assembly using the A195HW dogbone nut plate and 2x A240HW 5/16"-18 x 5/8" flange screws (Figure 2). **NOTE:** Hand tighten only at this time.
2. Install the muffler assembly onto the motorcycle. Use 1x A361HW M8x1.25x20mm flange screw to attach the mounting bracket to the muffler mount on the subframe and use 1x A361HW, A852HW M8 Flange Nut, and A310HW M8 oversized washer to mount to the upper subframe mount as shown in Figure 3 and 4. **NOTE:** If the factory luggage rack is already installed on the motorcycle the A852HW M8 Flange Nut and the A310HW washer may be excluded from the installation as the factory nut will be used instead.
3. Install the stock exhaust clamp over the muffler inlet and pre-chamber outlet and tighten to manufacturer's suggested torque setting (Figure 5).
4. Install the 2x A272HW SS Hose Clamps onto the K445HP heat shield, orienting the screw heads so that they are facing downwards (Figure 6).
5. Install the K445HP heat shield onto the mid-pipe. Adjust the position of the heat shield so that the rear edge of the heat shield has an even gap with the muffler cone (Figure 7).
6. After installation and before starting motorcycle, completely clean pipes and mufflers with cleaning solvent and a clean, soft cloth that will not leave a residue. **NOTE:** Any residue, oil, or fingerprints may cause discoloration when the metal heats up.
7. Be sure to tighten all hardware before starting your motorcycle.
8. **IMPORTANT:** AFTER TEST RIDE LET PIPES COOL DOWN AND RE-TORQUE MUFFLER BAND CLAMP.

FIGURE 1



FIGURE 2

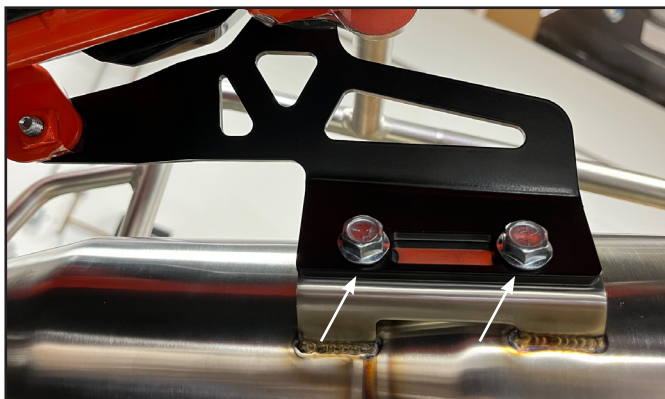


FIGURE 3



FIGURE 4



FIGURE 5

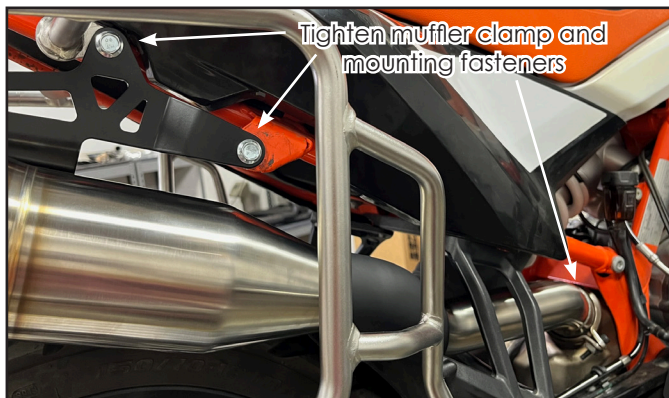


FIGURE 6



FIGURE 7



FIGURE 8



Emissions Notice:

In California, in order to meet Air Resources Board emissions requirements, certain aftermarket part applications have been identified as replacements, and others have received ARB Executive Orders. All other emissions related aftermarket parts are for competition use only. A list of replacement parts and EO parts, and corresponding fitment is provided at vanceandhines.com/california.

Warranty:

All Vance & Hines products are warranted against defects in material and workmanship for a period of 90 days. This warranty does not cover discoloration or rust. This warranty shall be limited to the repair or replacement of the product, which may be proven defective under normal use. Vance & Hines will not warranty any system that has been abused, misused, improperly installed or modified.

Dealers or distributors are not authorized to make dispositions binding upon Vance & Hines. Vance & Hines will not be responsible for any labor charges incurred in removing or replacing any system under warranty. A return authorization number and a copy of the original purchase invoice must accompany all returns. Parts returned without a return authorization may be refused.

13861 ROSECRANS AVENUE / SANTA FE SPRINGS, CA 90670

SALES: (562) 921-5388

TECHNICAL: (562) 926-5291

FAX: (562) 802-0110

vanceandhines
.com