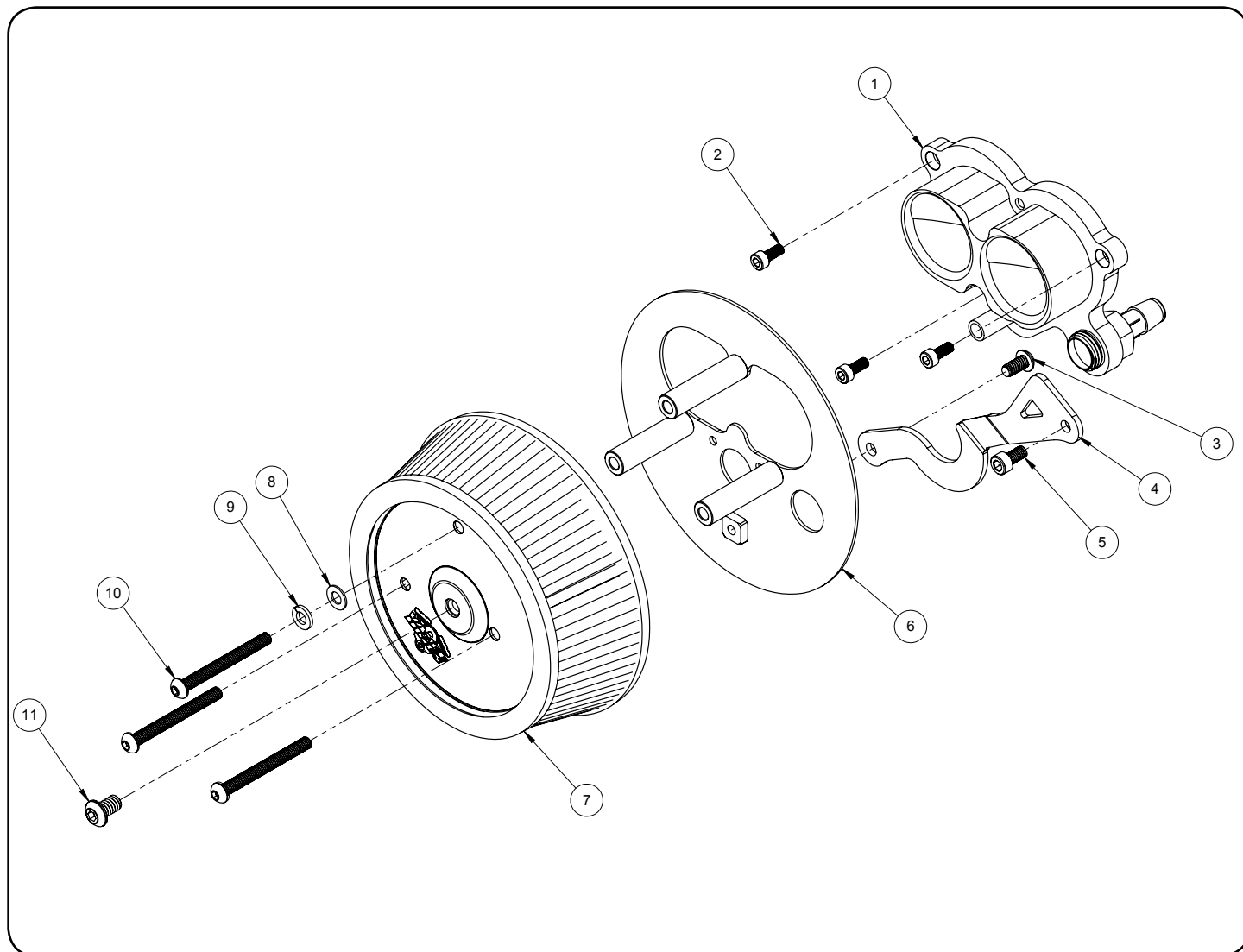


INSTALLATION INSTRUCTIONS: YAMAHA BOLT V02 AIR INTAKE KIT PART# 71023

Congratulations, you have purchased the finest air intake system for your motorcycle on the market. Your Vance & Hines Air Intake system is designed and crafted for maximum performance and a perfect fit. Please follow the installation instructions below and if you have any questions, please call our technical support line at (562) 926-5291.

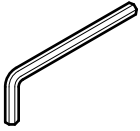


PARTS LIST

NO.	Description	Qty.
1	Aluminum Dual Venturi	1
2	M5 x .08 x 12mm SHCS	3
3	1/4-20 x 1/2 BHCS	1
4	Mounting Bracket	1
5	M6 x 1.0 x 12mm SHCS	1

6	Filter Mounting Bracket	1
7	Air Filter Element	1
8	Washer	1
9	1/4\" Lock Washer	1
10	M6 x 1.0 x 60mm BHCS	3
11	5/16-18 x 1/2 BHCS	1

TOOLS REQUIRED



**Allen Wrenches: 5/32",
4mm, 5mm**

Loctite 243 (Blue)

OEM SYSTEM REMOVAL

1. Using a 4mm Allen wrench, remove the filter cover by first removing the 4 external socket head capscrews securing the filter cover, then remove the cover assembly.
2. This will expose the filter element, which is then removed by pulling it out of the housing.
3. Using a 5mm Allen wrench, remove the socket head capscrew located at the front of the housing. Using a 4mm Allen wrench remove the 3 socket head capscrews attaching the housing to the throttle body.
4. Pull the air cleaner housing away slightly from the engine. Located on the backside of the housing is a breather hose attached with a wire clamp. Carefully squeeze the clamp's tabs and remove the hose from the air cleaner housing while removing the housing from the vehicle.
5. None of the OEM parts will be reused for this installation.

INSTALLATION OF V02 AIR FILTER

1. For a clear understanding of this installation it is best to refer to the exploded view diagram (Page 1) while reading these instructions.
2. When installing or servicing the air cleaner, apply Loctite 243 (blue) to threads of all fasteners.
3. Squeeze the tabs on the wire clamp to expand the clamp and install the breather hose on the nipple located on the backside of the Vance and Hines dual venturi making sure the hose is firmly seated against the backside of the venturi plate.
4. Using the three supplied M5 x 12mm socket head capscrews (2), attach the aluminum dual venturi (1) to the stock throttle body.
5. Attach the mounting bracket (4) to the filter mounting plate (6) using the supplied 1/4-20 x 1/2 button head (3). **NOTE:** Roughly align the curve in the mounting bracket with the circular hole in the filter mounting plate. Do not fully tighten the 1/4" Button Head at this time.
6. Place the filter mounting plate (6) on the aluminum dual venturi (1) roughly aligning the plate and venturi. Next put the filter element in place (logo should be near the bottom). Using the supplied three M6 x 60mm button head capscrews (10) secure both the filter and mounting plate to the venturi. **NOTE:** Use a washer (7) and lock washer (8) on the button head capscREW located at the 12 O'clock position. (See diagram on page 1).
7. Install the supplied M6 x 1.0 x 12mm capscREW (5) through the mounting plate (4) and into the OEM bracket on the front cylinder head.
8. Align all elements and tighten all bolts securely.
9. This kit does not allow for the re-installation of the OEM air filter cover. Vance and Hines accessory covers are recommended. Install the 5/16-18 x 1/2" button head bolt (11) in center of air filter (7).
10. After 100 miles check to be sure that all the bolts are still tight. Periodically ensure that all fasteners remain tight.

Emissions Notice:

In California, in order to meet Air Resources Board emissions requirements, certain aftermarket part applications have been identified as replacements, and others have received ARB Executive Orders. All other emissions related aftermarket parts are for competition use only. A list of replacement parts and EO parts, and corresponding fitment is provided at vanceandhines.com/California.

Warranty:

All Vance & Hines products are warranted against defects in material and workmanship for a period of 90 days. This warranty does not cover discoloration or rust. This warranty shall be limited to the repair or replacement of the product, which may be proven defective under normal use. Vance & Hines will not warranty any system that has been abused, misused, improperly installed or modified.

Dealers or distributors are not authorized to make dispositions binding upon Vance & Hines. Vance & Hines will not be responsible for any labor charges incurred in removing or replacing any system under warranty. A return authorization number and a copy of the original purchase invoice must accompany all returns. Parts returned without a return authorization may be refused.

13861 ROSECRANS AVENUE / SANTA FE SPRINGS, CA 90670

SALES: (562) 921-5388

TECHNICAL: (562) 926-5291

FAX: (562) 802-0110

vanceandhines
.com