

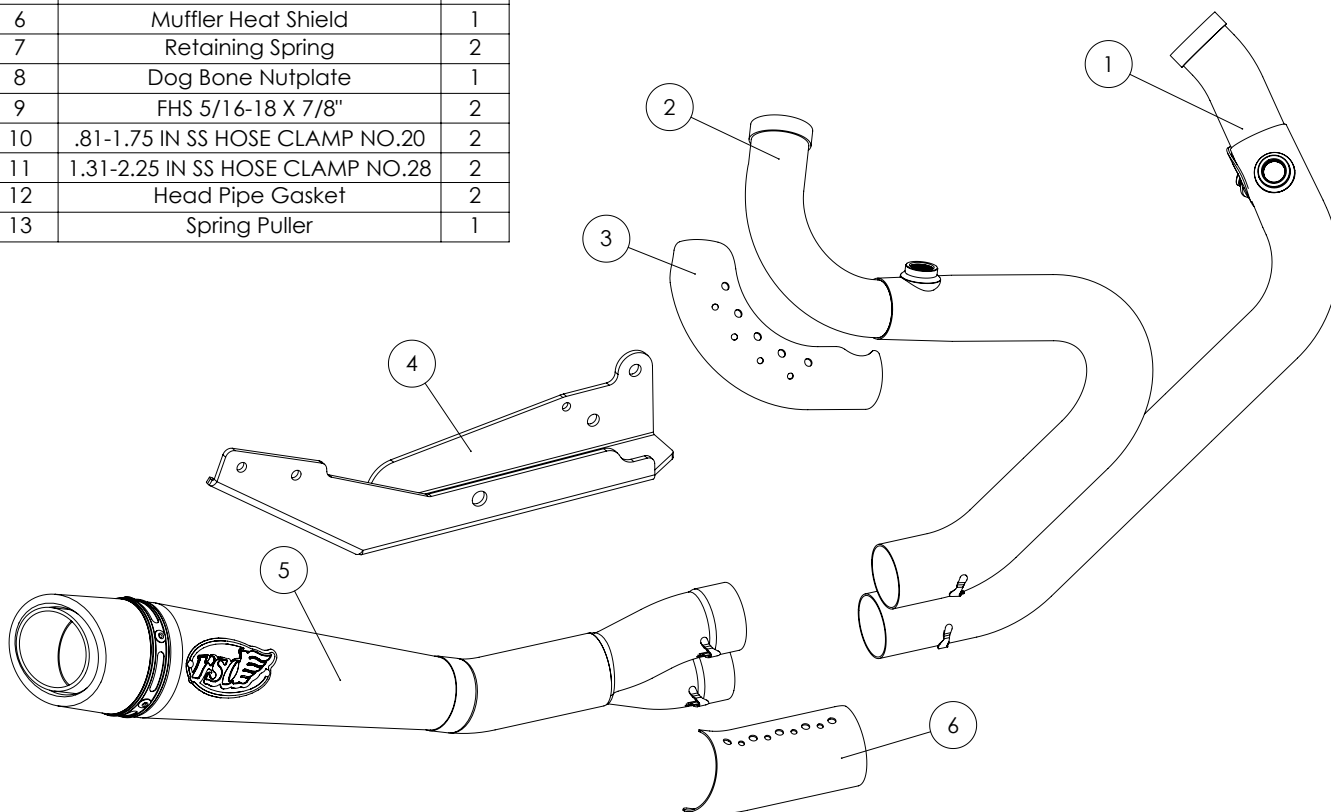


INSTALLATION INSTRUCTIONS HARLEY-DAVIDSON SPORTSTER RSD SLANT LOW 2-INTO-1 PART# 11815

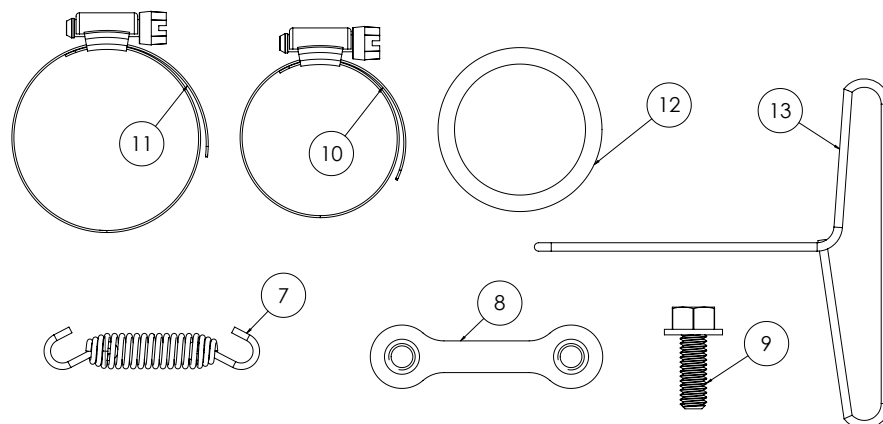
Congratulations, you have purchased the finest exhaust system available for your motorcycle. Your Vance & Hines exhaust is designed and crafted for performance, quality and style. Please follow the instructions below, check exhaust system for missing or damaged parts and if you need any assistance please contact our technical support line (562) 921-7461.

PARTS LIST

ITEM NO.	DESCRIPTION	QTY.
1	Front Head Pipe	1
2	Rear Head Pipe	1
3	Rear Head Pipe Heat Shield	1
4	Mount bracket	1
5	Muffler	1
6	Muffler Heat Shield	1
7	Retaining Spring	2
8	Dog Bone Nutplate	1
9	FHS 5/16-18 X 7/8"	2
10	.81-1.75 IN SS HOSE CLAMP NO.20	2
11	1.31-2.25 IN SS HOSE CLAMP NO.28	2
12	Head Pipe Gasket	2
13	Spring Puller	1



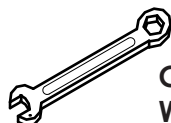
HARDWARE



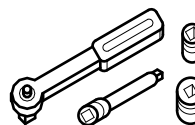
TOOLS REQUIRED



ALLEN WRENCHES:
3/16", 5/16", 5mm,
10mm



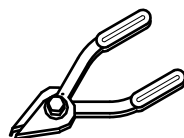
**COMBINATION
WRENCHES:** 9/16",
1/2", 7/8", OR 22mm
& 14mm



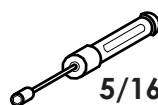
**1/4" DRIVE RATCHET
& WOBBLE EXTEN-
SION; SOCKETS:**
1/2", 9/16" DEEP
SOCKET



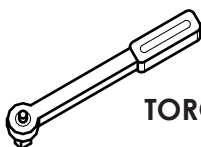
**FLAT BLADE SCREW-
DRIVER**



SNAP RING PLIERS



5/16" NUTDRIVER



TORQUE WRENCH

STOCK EXHAUST SYSTEM REMOVAL

NOTE: These instructions are written for late model motorcycles equipped with O2 sensors. If you are installing these pipes on a bike which is not equipped with O2 sensors, ignore all instructions which reference them.

1. Find and unplug the O2 sensor wires from the wiring harness and remove nylon cable tie holding front wire to frame. Feed the end of the wires through the frame so they are free from the motorcycle. **NOTE:** Pay attention to wire routing for re-installation.
2. Loosen the heat shield clamps on both the front and rear exhaust pipes. This allows easier access to the head pipe mounting nuts.
3. Remove the two head pipe exhaust mounting nuts from each flange, located at the cylinder head.
4. Remove the clamp bolt which mounts the rear head pipe to the belt drive cover bracket.
5. Remove the two bolts from each muffler body where they attach to the mounting bar. Carefully remove exhaust pipes from the motorcycle and set aside.
6. Using a 14mm wrench, carefully remove the O2 sensors from the stock head pipes and save for re-use with the new system.
7. Remove the brake rod at the rear junction by removing circlip and pin.
8. Remove the drive belt cover and take the bracket off the rear cover bolt, the bracket will not be re-used.
9. Remove the exhaust mounting bracket by removing the three mount bolts and washers attaching the exhaust bracket (save hardware for re-use) to the motor.
10. Carefully remove exhaust port flanges and circlips from the stock exhaust system using snap ring pliers. **NOTE:** Replace bent or damaged circlips.

VANCE & HINES EXHAUST INSTALLATION

1. Carefully install the new exhaust port gaskets **(12)** into both the front and rear exhaust ports. Be sure to evenly insert each gasket into port opening.
2. Install and tighten the supplied mounting bracket **(4)** using the stock bolts and washers. Torque to 30-33 Ft./Lbs.
3. Re-install the drive belt cover. Torque the 1" x 3/8" bolt to 30-33 Ft./Lbs. and the 2" x 1/4" bolts to 80-120 In/Lbs.
4. Re-install the brake rod junction, replacing the pivot pin and circlip.
5. Carefully unpack both the headers **(1,2)** and the muffler body **(5)** from their respective protective packaging and place them on a non-abrasive surface such as a blanket or carpet.
6. Install the rear head pipe heat shield **(3)** by laying the rear head pipe into the heat shield and loosely install the #20 hose clamps **(10)** into the mounting clips. **NOTE:** Screw heads should point up for access when the system is installed. Do not yet tighten.
7. Apply a small amount of anti-seize compound to the threads of the O₂ sensors and install them into the appropriate O₂ sensor ports located on the head pipes. **NOTE:** Leave the O₂ plugs in either the 12mm or 18mm bungs depending on which ones are being used.
8. Install circlips and flanges from stock system onto both new head pipes.
9. Using the stock flange nuts, carefully install the head pipes into exhaust ports. **NOTE:** Do not tighten at this time.
10. Slip the muffler/collector assembly onto the head pipes, secure them with the supplied springs **(7)** using the spring puller tool.
11. Align the mounting bracket **(4)** to the megaphone, slide the nutplate **(8)** inside the bracket that is welded to the backside of the muffler body and attach the muffler body to the mounting bracket using the two 5/16" x 7/8" flange head bolts **(9)**. Leave them loose at this time.
12. Tighten the cylinder port flange nuts on front and rear cylinders.
13. Check the alignment of muffler body then tighten the 5/16" x 7/8" flange head bolts **(9)** that attach the muffler body to the bracket.
14. Install the muffler heat shield **(6)** with the screw heads pointing down and secure all heat shield clamps.
15. Plug the O₂ sensors back into the wiring harness and route the wires away from the hot areas of the motorcycle.
16. Check for adequate clearance between all exhaust system components and motorcycle accessories prone to heat damage.
17. Be sure to tighten all hardware before starting your motorcycle.

EXHAUST CARE (STAINLESS STEEL)

1. It is considered normal for Stainless Steel exhaust systems to discolor due to heat.
2. High performance engine tuning utilizing a dyno will likely result in severe discoloration.
3. Avoid long periods of idling as this can cause discoloration. Intake leaks can cause the engine to run lean and overheat, this could lead to discoloration.
4. Make sure there are no exhaust leaks at the junction of the exhaust pipes and cylinder head. We recommend replacing gaskets if they are worn.

Emissions Notice:

In California, in order to meet Air Resources Board emissions requirements, certain aftermarket part applications have been identified as replacements, and others have received ARB Executive Orders. All other emissions related aftermarket parts are for competition use only. A list of replacement parts and EO parts, and corresponding fitment is provided at vanceandhines.com/California.

Warranty:

All Vance & Hines products are warranted against defects in material and workmanship for a period of 90 days. This warranty does not cover discoloration or rust. This warranty shall be limited to the repair or replacement of the product, which may be proven defective under normal use. Vance & Hines will not warranty any system that has been abused, misused, improperly installed or modified.

Dealers or distributors are not authorized to make dispositions binding upon Vance & Hines. Vance & Hines will not be responsible for any labor charges incurred in removing or replacing any system under warranty. A return authorization number and a copy of the original purchase invoice must accompany all returns. Parts returned without a return authorization may be refused.

13861 ROSECRANS AVENUE
SANTA FE SPRINGS, CA 90670
SALES: (562) 921-5388
TECHNICAL: (562) 926-5291
FAX: (562) 802-0110

vanceandhines
.com