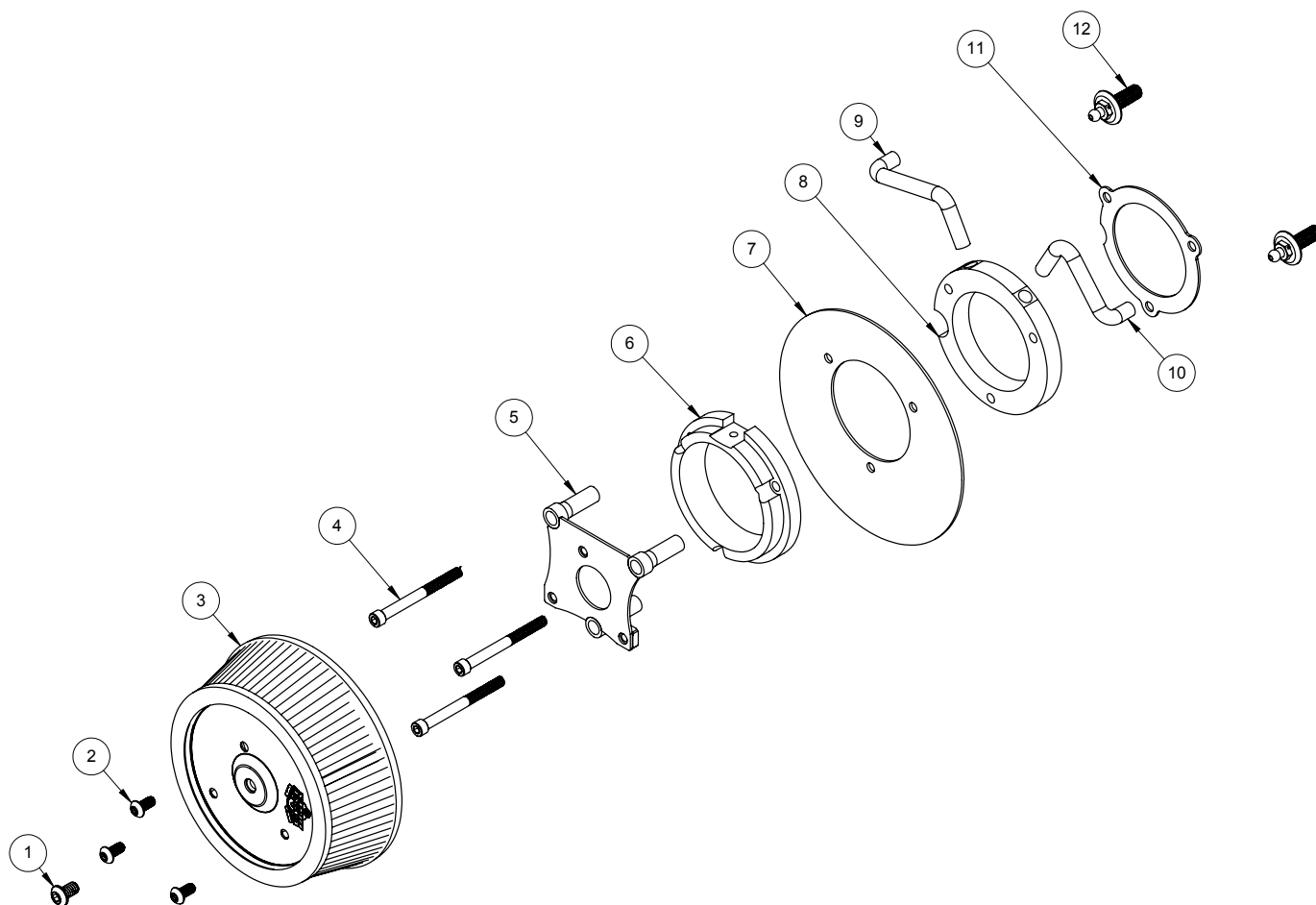




INSTALLATION INSTRUCTIONS: 2017 HARLEY-DAVIDSON TOURING ROUND NAKED AIR FILTER KIT PART# 71031

Congratulations, you have purchased the finest air intake system for your motorcycle on the market. Your Vance & Hines Air Intake system is designed and crafted for maximum performance and a perfect fit. Please follow the installation instructions below and if you have any questions, please call our technical support line at (562) 926-5291.

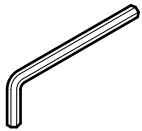
Exempt from emissions tampering regulations under CARB EO# D-632-4 for 2017-2021 Harley-Davidson Touring and 2018-2021 Harley-Davidson Softail models.



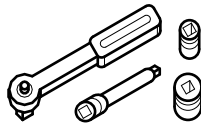
PARTS LIST

NO.	Description	Qty.			
1	5/16-18 x 1/2 BHCS	1	7	Backing Plate	1
2	1/4-20 x 1/2 BHCS	3	8	Throttle Body Spacer	1
3	Air Filter	1	9	Rear Cylinder Bleed Hose	1
4	1/4-20 x 2.75 SHCS	3	10	Front Cylinder Bleed Hose	1
5	Filter Mount Bracket	1	11	Throttle Body Gasket	1
6	Aluminum Venturi	1	12	3/8-16 UNC-2A Bleed Bolt	2
			13	CARB Decal D-632-4(not pictured)	1

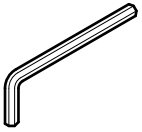
TOOLS REQUIRED



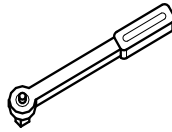
T27 Torx wrench



**1/4" or 3/8" Drive Ratchet
7/16" Hex Socket and 5/16" and
5/32" Allen Socket**



**Allen Wrenches: 3/16",
5/32", 5/16"**



**Inch-pound Torque
wrench**

Loctite 243 (blue)

OEM SYSTEM REMOVAL

1. Take off the air filter cover by removing the 5/16"-18 x 1/2" OE button head cap screw in the center.
2. This will expose the filter element, which is then removed by taking out the three Torx head cap screws.
3. Remove the breather hoses from the cylinder head breather bolts by pulling on them.
4. Remove the molded plastic filter holder and gasket or o-ring by unbolting the cylinder head breather bolts. Be sure that the throttle body surface is clean and dry. NOTE: On CVO models, separate purchase of HD part# 16400049 bracket is required for installation.

INSTALLATION OF ROUND NAKED AIR FILTER KIT

1. For a clear understanding of this installation it is best to refer to the exploded view diagram while reading these instructions.
2. When installing or servicing the air cleaner, apply Loctite 243 (blue) to threads of all fasteners.
3. Install the cylinder head bleed bolts (12) to 120-144 in-lbs (13.6-16.3 Nm) through the induction module support bracket and into the heads.
4. Install the breather hoses (Front #10 & Rear #9) through the top two holes in the throttle body spacer (8), aligned as shown. **NOTE:** Applying oil to the breather hoses prior to installation will allow for easier insertion.
5. Using the three 1/4"-20 x 2.75" socket head cap screws (4), sandwich the filter mount bracket (5), the venturi (6), the backing plate (7), the throttle body spacer (8) w/ breather hoses (9&10), and the gasket (11) together as shown and install onto the throttle body. Note the direction of the cutouts on items 8 & 11. These should match the protrusion on the throttle body. Make sure the Inside edges of all of these parts are aligned before tightening to 55-60 in-lbs (6.2-6.8 Nm).
6. Insert the breather hoses (Front #10 & Rear #9) over the bleed bolts (12).
7. Using the remaining three 1/4"-20 x 1/2" button head cap screws (2) install the air filter element (3) and torque to 55-60 in-lbs (6.2-6.8 Nm). **NOTE:** The Vance & Hines logo should be at approximately three o'clock when viewed from the side. The filter is pre-oiled and does not need to be oiled prior to installation.
8. This kit does not allow for the re-installation of the OEM air filter cover. If the Vance & Hines air filter cover is not to be used, use 5/16"-18 x 1/2" button head cap screw (1) (supplied) in center hole of air filter.
9. Place provided CARB EO Decal (D-632-4) in a visible location on the motorcycle's chassis near the air intake.
10. After 100 miles check to be sure that these bolts are still tight. Periodically ensure that these screws remain tight.

Emissions Notice:

In California, in order to meet Air Resources Board emissions requirements, certain aftermarket part applications have been identified as replacements, and others have received ARB Executive Orders. All other emissions related aftermarket parts are for competition use only. A list of replacement parts and EO parts, and corresponding fitment is provided at vanceandhines.com/california.

Warranty:

All Vance & Hines products are warranted against defects in material and workmanship for a period of 90 days. This warranty does not cover discoloration or rust. This warranty shall be limited to the repair or replacement of the product, which may be proven defective under normal use. Vance & Hines will not warranty any system that has been abused, misused, improperly installed or modified.

Dealers or distributors are not authorized to make dispositions binding upon Vance & Hines. Vance & Hines will not be responsible for any labor charges incurred in removing or replacing any system under warranty. A return authorization number and a copy of the original purchase invoice must accompany all returns. Parts returned without a return authorization may be refused.

13861 ROSECRANS AVENUE / SANTA FE SPRINGS, CA 90670

SALES: (562) 921-5388

TECHNICAL: (562) 926-5291

FAX: (562) 802-0110

vanceandhines
.com