



READ ALL INSTRUCTIONS BEFORE BEGINNING INSTALLATION

**OEM SYSTEM
REMOVAL**

1. Take off the air filter cover by removing the 5/16"-18 x 1/2" OE button head cap screw in the center. Set the air filter cover and the screw aside for re-use.
2. This will expose the filter element, which is then removed by taking out the three Torx head cap screws.
3. Remove the breather hoses from the cylinder head breather bolts by pulling on them.
4. Remove the backing plate and gasket or o-ring by unbolting the cylinder head breather bolts. Be sure that the surface is clean and dry. NOTE: on 2011 CVO touring models, HD #27712-08 bracket needs to be installed on the induction module.

**INSTALLATION OF VANCE
AIR FILTER KIT**

1. For a clear understanding of this installation it is best to refer to the exploded view diagram while reading these instructions.
2. When installing or servicing the air cleaner, apply Loctite 243 (blue) to threads of all fasteners.
3. Install the cylinder head breather bolts (1) to 120-144 in-lbs (13.6-16.3 Nm) through the crossover bracket and into the intake manifold.
4. Install the breather hoses (RH #2 & LH #3) through the top two holes in the filter backing plate (6), aligned as shown.
5. Using the three 1/4"-20 x 2.25" socket head cap screws (9), sandwich the filter mount bracket (8), the venturi (7) the filter backing plate w/ breather hoses (6), the backing plate stiffener (5) and the gasket (4) together as shown and install onto the throttle body. Make sure the Inside edges of all of these parts are aligned before tightening to 55-60 in-lbs (6.2-6.8 Nm).
6. Using the remaining three 1/4"-20 x 1/2" button head cap screws (11) install the air filter element (10) and torque to 55-60 in-lbs (6.2-6.8 Nm). NOTE: The Vance & Hines logo should be at approximately three o'clock when viewed from the side. The filter is pre-oiled and does not need to be oiled prior to installation.
7. Feed the 5/16"-18 x 1/2" OE button head cap screw through the OE Air cover.

Congratulations, you have purchased the finest air intake system for your motorcycle on the market. Your Vance & Hines Air Intake system is designed and crafted for maximum performance and a perfect fit. Please follow the installation instructions below and if you have any questions, please call our technical support line at (562) 926-5291.

Attention installer (if other than owner), please forward this instruction sheet to the owner of this product. These instructions contain valuable information to end user.

This kit fits 2008-later Touring models with 50mm Fly-By-Wire throttle bodies.

NOTE: 20011 CVO Touring models will require purchase of HD #27712-08 induction module bracket for this kit installation.

Exempt from emissions tampering regulations under CARB EO# D-632-4 for 2008-2013 Harley-Davidson Touring models.

**TOOLS
REQUIRED**

- 3/16" Allen wrench
- 5/32" Allen wrench
- T27 Torx wrench
- 1/4" or 3/8" drive Ratchet
- 3/8" Hex socket
- 7/16" Hex socket
- 5/16" Allen socket
- 5/32" Allen socket
- Inch-pound Torque wrench
- Loctite 243 (blue)

and into the center of the air filter element (10), tighten securely.

- Place provided CARB EO Decal (D-632-4) in a visible location on the motorcycle’s chassis near the air intake.
- After 100 miles check to be sure that these bolts are still tight. Periodically ensure that these screws remain tight.

VANCE & HINES OPTIONAL ACCESSORIES

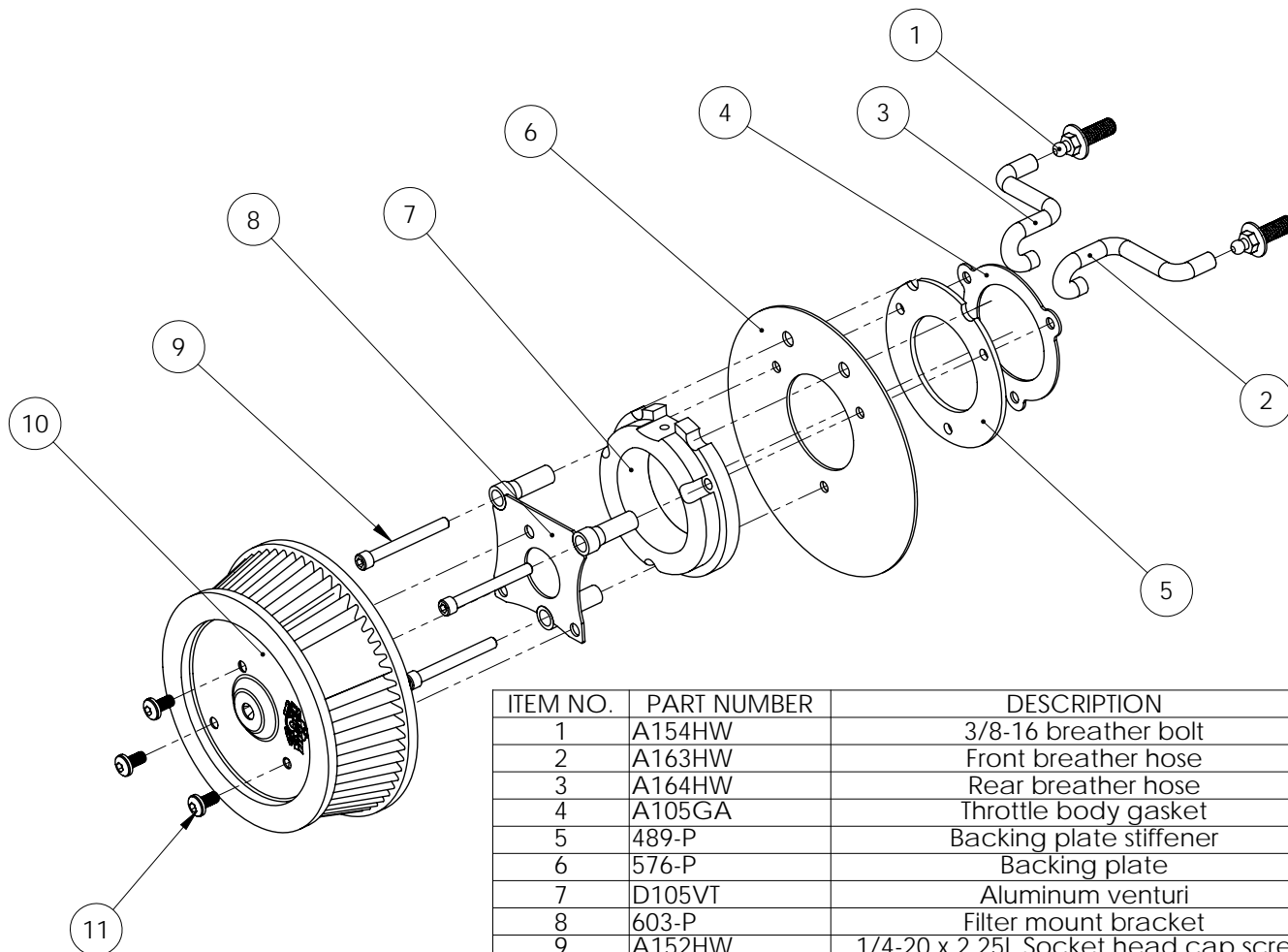
FUELPAK



FUEL MANAGEMENT:
Take the guess work out of fuel injection with Fuelpak Fuel Management. Contact your local dealer or call (562) 921-0071 to order. Visit fuelpakfi.com for more information.
Fuelpak is intended for racing or off-highway use only, and is not legal for sale or use in California on pollution-controlled vehicles.

| | |
|--------|--------------------------------|
| D100FL | Replacement Air Filter Element |
| 71013 | Chrome Skullcap Cover |
| 71015 | Black Skullcap Cover |

EXPLODED VIEW DIAGRAM



| ITEM NO. | PART NUMBER | DESCRIPTION | QTY. |
|----------|-------------|--------------------------------------|------|
| 1 | A154HW | 3/8-16 breather bolt | 2 |
| 2 | A163HW | Front breather hose | 1 |
| 3 | A164HW | Rear breather hose | 1 |
| 4 | A105GA | Throttle body gasket | 1 |
| 5 | 489-P | Backing plate stiffener | 1 |
| 6 | 576-P | Backing plate | 1 |
| 7 | D105VT | Aluminum venturi | 1 |
| 8 | 603-P | Filter mount bracket | 1 |
| 9 | A152HW | 1/4-20 x 2.25L Socket head cap screw | 3 |
| 10 | D100FL | Air filter element | 1 |
| 11 | A235HW | 1/4"-20 x 1/2" Button head cap screw | 3 |

WARRANTY

Vance & Hines products are warranted against defects in material and workmanship for a period of 90 days from the date of purchase from an authorized dealer. This warranty does not cover discoloration of chrome finishes. This warranty is limited to the repair or replacement of a product proven to be defective from normal use. Vance & Hines products are designed to fit and operate on OEM motor and chassis. This warranty does not cover any product subject to abuse, misuse, improper installation or modification.

FUEL MANAGEMENT

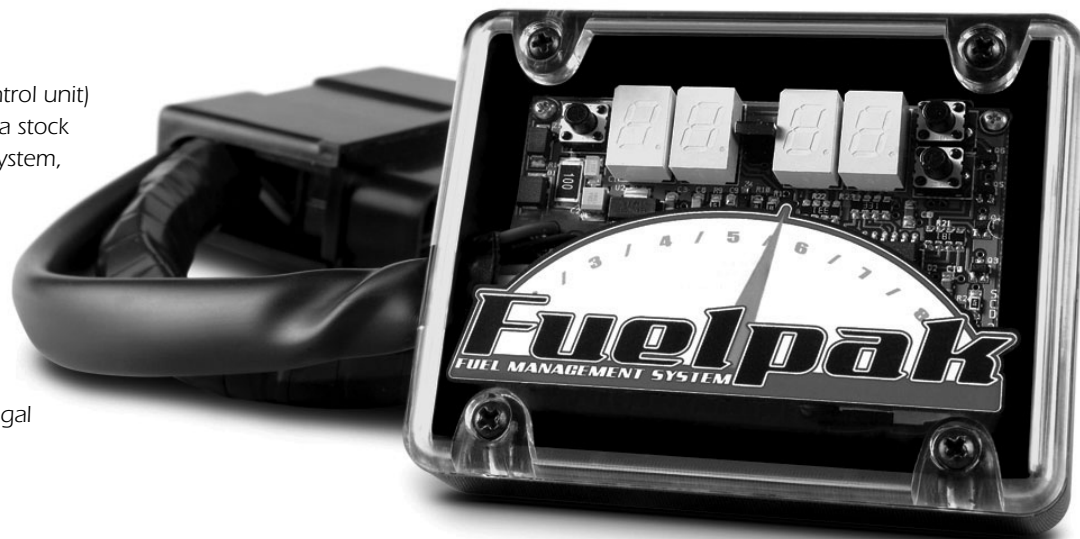
GET THE MOST OUT OF YOUR RIDING EXPERIENCE...

AN AFTERMARKET EXHAUST SYSTEM IS ONLY YOUR FIRST STEP, NOW YOU NEED FUEL MANAGEMENT.

NOW YOU NEED FUELPAK.

Your fuel injected Harley-Davidson® is equipped with an ECU (electronic control unit) that's programmed to deliver fuel to the motor based on an air/fuel ratio for a stock air filter and stock exhaust system. When you install a performance exhaust system, your airflow changes, so you need a fuel management system that adjusts your air/fuel ratio to match the changes. That fuel management system is Fuelpak. Fuelpak adds and takes away fuel, allowing for a more precise range of refinement in your air/fuel ratio. Get the perfect fuel management combination with your Vance & Hines exhaust system, get Fuelpak. For more information visit the tuning center at fuelpakfi.com

NOTICE: Fuelpak is intended for racing or off-highway use only, and is not legal for sale or use in California on pollution-controlled vehicles.



13861 ROSECRANS AVENUE / SANTA FE SPRINGS, CA 90670
SALES: (562) 921-5388 / TECHNICAL: (562) 926-5291 / FAX: (562) 802-0110
VANCEANDHINES.COM