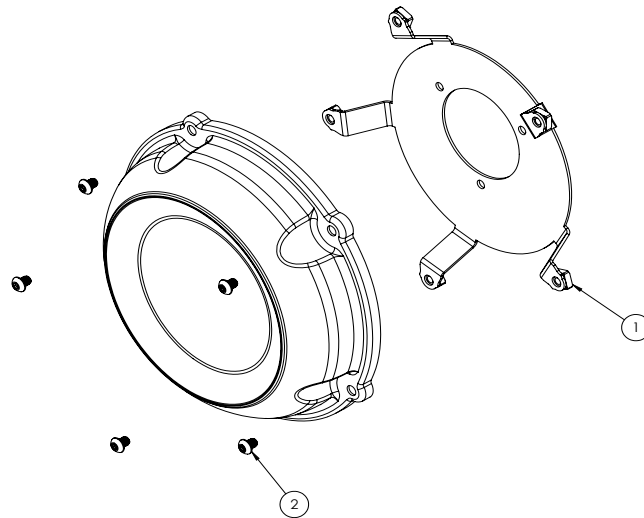


INSTALLATION INSTRUCTIONS: 2018 SOFTAIL STOCK COVER ADAPTER FOR VO2 NAKED AIR INTAKE KIT (71031) PART# 71051

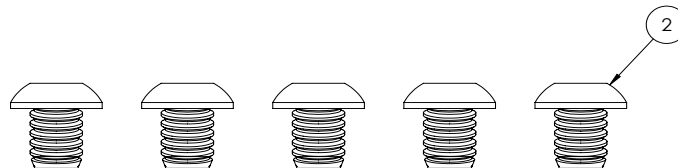
Please follow the instructions below, check exhaust system for missing or damaged parts and if you need any assistance please contact our technical support line (562) 921-7461.

PARTS LIST

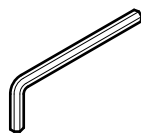
Part No.	Description	Qty.
1	BACKING PLATE ADAPTER	1
2	B.H.C.S., #1/4-20 x 5/16"	5



HARDWARE



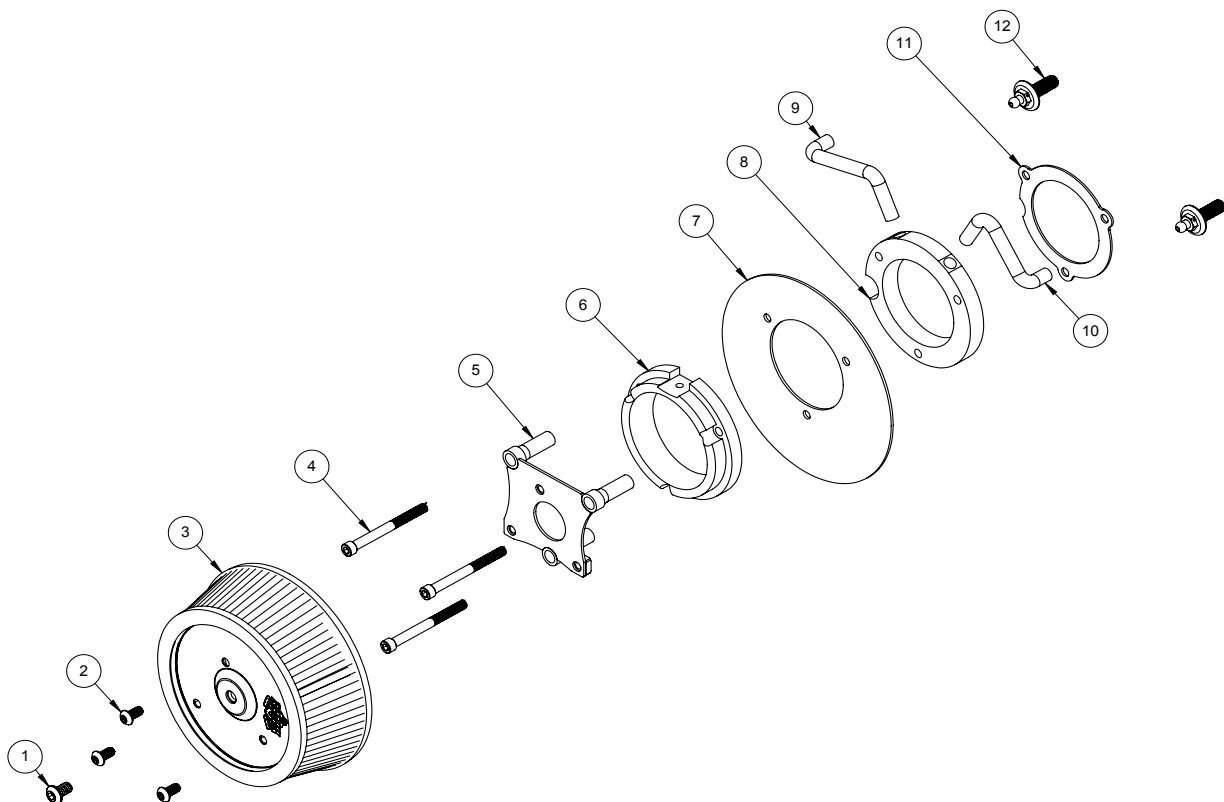
TOOLS REQUIRED



5/32" Allen Wrench
3/16" Allen Wrench

VO2 NAKED AIR INTAKE KIT REMOVAL

1. Remove 3X 1/4-20 X 1/2" BHCS (Item 2, Page 2) holding air element onto backing plate.
2. Remove 3X 1/4-20 X 2.75" SHCS (Item 4, Page 2) from stand-off plate, effectively removing the air intake kit from the throttle body.
3. Pull oil bleed hose lines (Item 9, Page 2)(Item 10, Page 2) from bleed bolts (Item 12, Page 2). Bleed bolts can be left in mounting positions at this time.



VANCE & HINES STOCK COVER ADAPTER INSTALLATION

1. Replace the current backing plate (7, page 2) with the new stock cover adapter (1, Page 1). Reassemble the air filter kit in the same manner it was taken off. Pay attention to the exploded view on page 2 for the correct order of assembly.
2. Tighten the 1/4-20 X 2.75" SHCS (Item 4, Page 2) to 55-60 in-lbs (6.2-6.8 Nm).
3. Tighten the 1/4-20 X 1/2" BHCS (Item 2, Page 2) to 55-60 in-lbs (6.2-6.8 Nm).
4. Attach stock cover to mounting points of the new backing plate using the supplied 1/4-20 X 5/16" BHCS (Item 2, Page 1) and tighten to 55-60 in-lbs (6.2-6.8 Nm). Use exploded view on page 1 for correct orientation.
5. After riding the first 100 miles, check all bolts to make sure they are tight. Periodically check to make sure everything in the air intake kit is correctly torqued.

Emissions Notice:

In California, in order to meet Air Resources Board emissions requirements, certain aftermarket part applications have been identified as replacements, and others have received ARB Executive Orders. All other emissions related aftermarket parts are for competition use only. A list of replacement parts and EO parts, and corresponding fitment is provided at vanceandhines.com/california.

Warranty:

All Vance & Hines products are warranted against defects in material and workmanship for a period of 90 days. This warranty does not cover discoloration or rust. This warranty shall be limited to the repair or replacement of the product, which may be proven defective under normal use. Vance & Hines will not warranty any system that has been abused, misused, improperly installed or modified.

Dealers or distributors are not authorized to make dispositions binding upon Vance & Hines. Vance & Hines will not be responsible for any labor charges incurred in removing or replacing any system under warranty. A return authorization number and a copy of the original purchase invoice must accompany all returns. Parts returned without a return authorization may be refused.

13861 ROSECRANS AVENUE / SANTA FE SPRINGS, CA 90670

SALES: (562) 921-5388

TECHNICAL: (562) 926-5291

FAX: (562) 802-0110

vanceandhines
.com