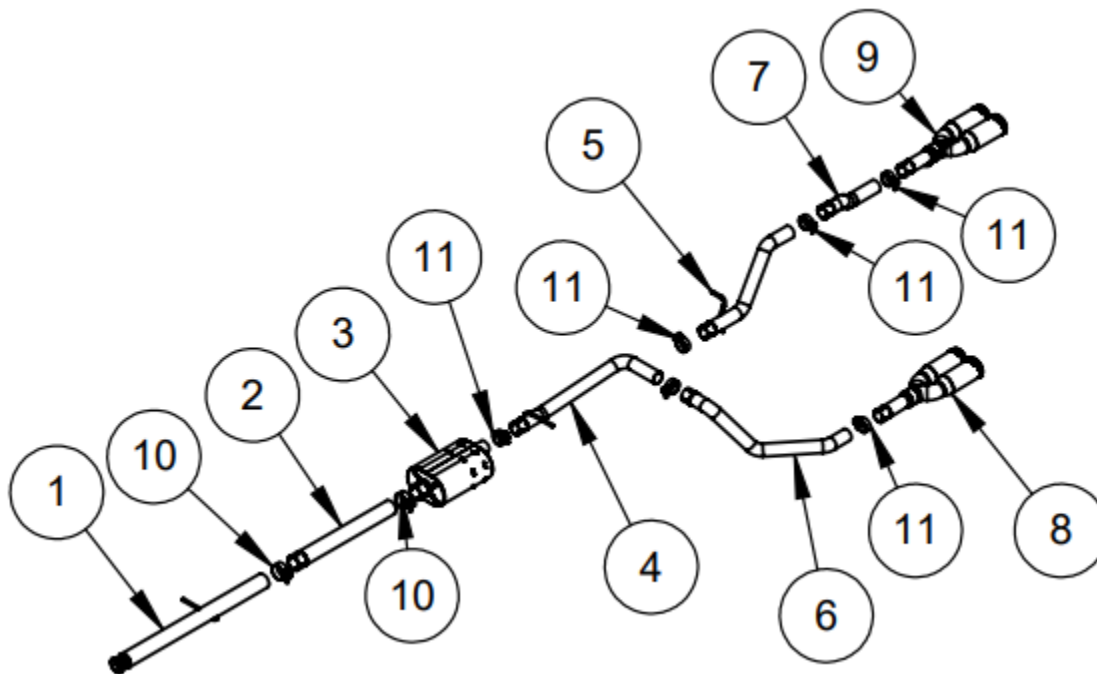




INSTALLATION INSTRUCTIONS:

2019+ CHEVY SILVERADO 6.2L V8, and 2019+ GMC Sierra 6.2L V8
CAT-BACK HOLESHOT EXHAUST
PART # 19855, 49857

Congratulations, you have purchased the finest exhaust system available for your truck. Your Vance & Hines exhaust is designed and crafted for performance, quality, and style. Please follow the instructions below, check exhaust system for missing or damaged parts and if you need any assistance, please contact our technical support line (562) 921-7461.



ITEM #	PART #	DESCRIPTION	QTY
1	C203FB	CHEVY/GMC FRONT FLANGE PIPE ASM	1
2	C205RB	CHEVY/GMC MIDPIPE	1
3	C210RB	CHEVY/GMC MUFFLER ASM	1
4	C215RB	CHEVY/GMC LEFT TAILPIPE A ASM	1
5	C220RB	CHEVY/GMC RIGHT TAILPIPE A ASM	1
6	C225RB	CHEVY/GMC LEFT TAILPIPE B	1
7	C230RB	CHEVY/GMC RIGHT TAILPIPE B	1
8	C335RP-S OR C235RM	CHEVY/GMC LEFT ELIMINATOR OR TWIN SLASH COLLECTOR	1
9	C340RP-S OR C240RM	CHEVY/GMC RIGHT ELIMINATOR OR TWIN SLASH COLLECTOR	1
10	A965HW	TORCA 3.50 IN DIA X 1.25 BAND	2
11	A982HW	TORCA 2.625 DIA X 1.00 BAND	6



INSTALLATION INSTRUCTIONS:

2019+ CHEVY SILVERADO 6.2L V8, and 2019+ GMC Sierra 6.2L V8
CAT-BACK HOLESHOT EXHAUST
PART # 19855, 49857

TOOLS REQUIRED:

- 3/8" OR 1/2" DRIVE RATCHET
- 3/8" DRIVE TORQUE WRENCH
- 6" RATCHET EXTENSION
- 16MM DEEP SOCKET
- 11MM SOCKET
- 14MM SOCKET
- MUFFLER STANDS (OPTIONAL)
- SPRAY LUBRICANT (OPTIONAL)

STOCK EXHAUST REMOVAL:**STEP 1:**

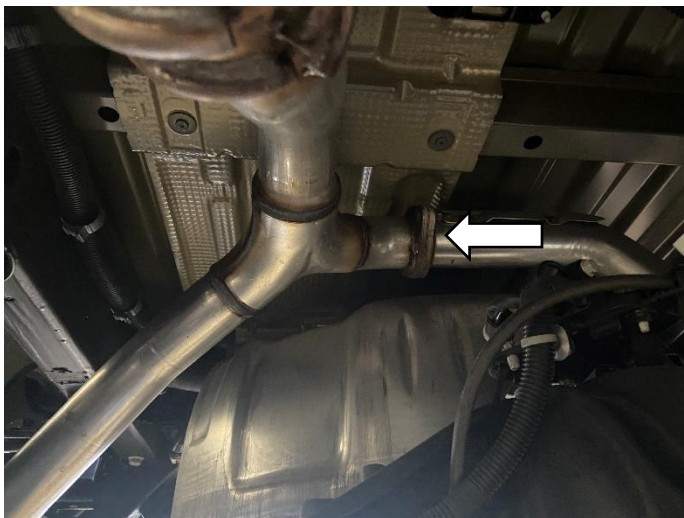
LOOSEN THE FACTORY EXHAUST CLAMP IN FRONT OF FLEX COUPLER

**STEP 2:**

SLIDE THE HANGER OUT OF THE RUBBER ISOLATOR FROM THE EXHAUST PIPE AND AT THE MUFFLER

STEP 3:

REMOVE TWO NUTS FROM THE FLANGE FOR THE DRIVERS SIDE TAILPIPE



STEP 4:

SLIDE THE DRIVERS SIDE TAILPIPE OUT OF OEM RUBBER ISOLATOR AND REMOVE TAILPIPE

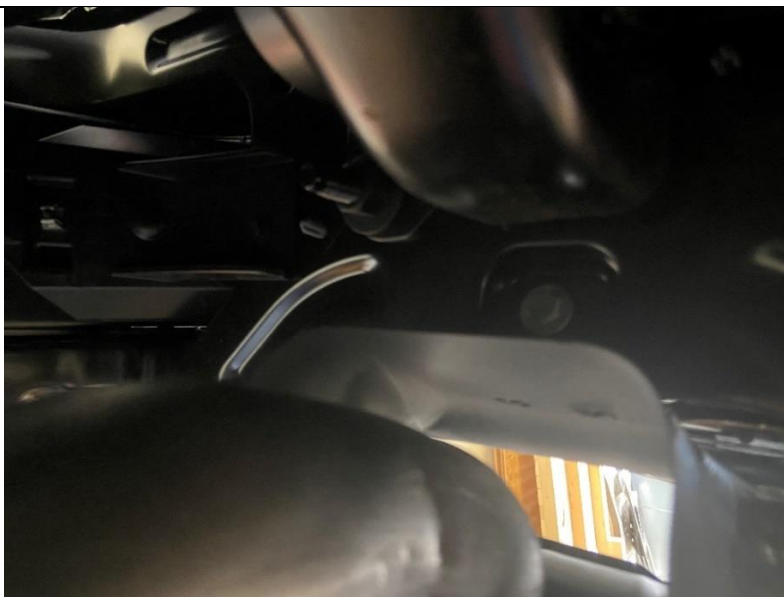


STEP 5:

SLIDE THE PASSENGER SIDE TAILPIPE OUT OF OEM RUBBER ISOLATOR. THE REST OF THE EXHAUST WILL NOW BE FREE TO SLIDE FORWARD AND REMOVE FROM THE TRUCK. LIFTING THE BODY FROM THE REAR AXLE WILL GIVE MORE CLEARANCE TO REMOVE THE REAR EXHAUST SECTION.

**STEP 6:**

REMOVE THE CHROME BUMPER TRIM EXHAUST PORTS. THERE ARE TWO SCREWS ON THE BACK SIDE OF THE TRIM ON THE TOP.

**STEP 7:**

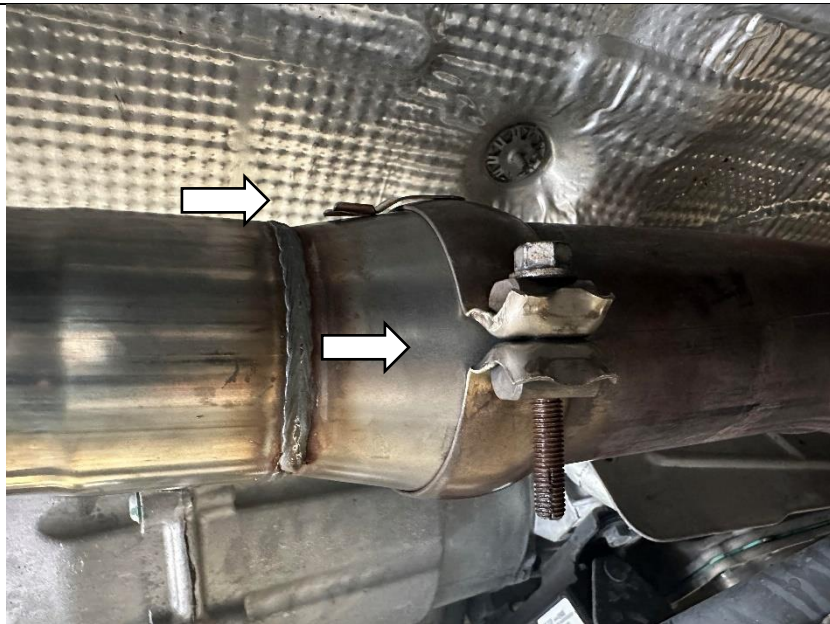
REMOVE THE OEM EXHAUST CLAMP

EXHAUST INSTALLATION:**STEP 1:**

SLIP THE OEM CLAMP ONTO THE END OF THE FRONT FLANGE PIPE. THEN INSERT INTO THE RUBBER ISOLATOR MAKING SURE THE HANGER SITS LEVEL WITH THE GROUND.

**STEP 2:**

LOOSELY SECURE THE FRONT FLANGE PIPE TO THE OEM TAILPIPE. BEND OEM TAB OUT OF THE WAY IF NEEDED.

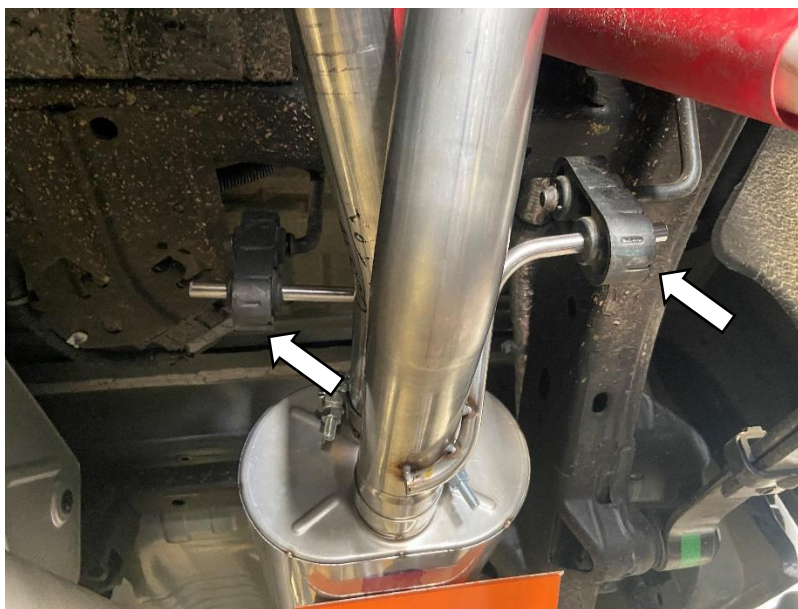


STEP 3:

SLIDE A EXHAUST CLAMP ONTO THE MIDPIPE ON BOTH ENDS. SLIDE THE MIDPIPE ON TO THE HEADPIPE AND THEN SLIDE THE MUFFLER ONTO THE MIDPIPE. SUPPORT WITH STANDS AS NEEDED. POSITION THE MUFFLER WITH LOGO FACING DOWN.

**STEP 4:**

SLIDE A CLAMP ONTO EACH TAILPIPE AND INSERT THE HANGER INTO THE RUBBER ISOLATOR AND ONTO THE MUFFLER EXIT. BE SURE THE HANGER SITS LEVEL WITH THE GROUND.



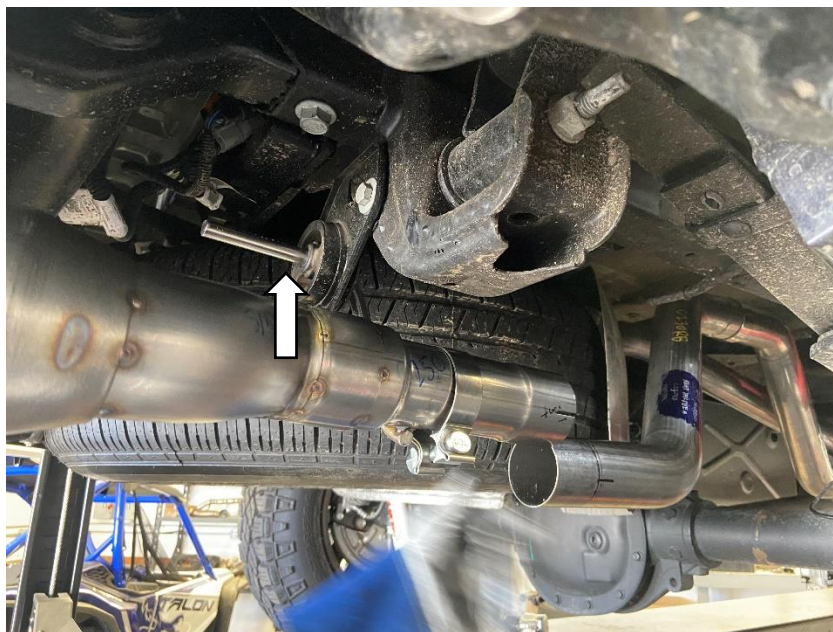
STEP 5:

SLIDE A CLAMP ONTO THE RIGHT TAILPIPE B AND INSTALL ONTO THE TAILPIPE A



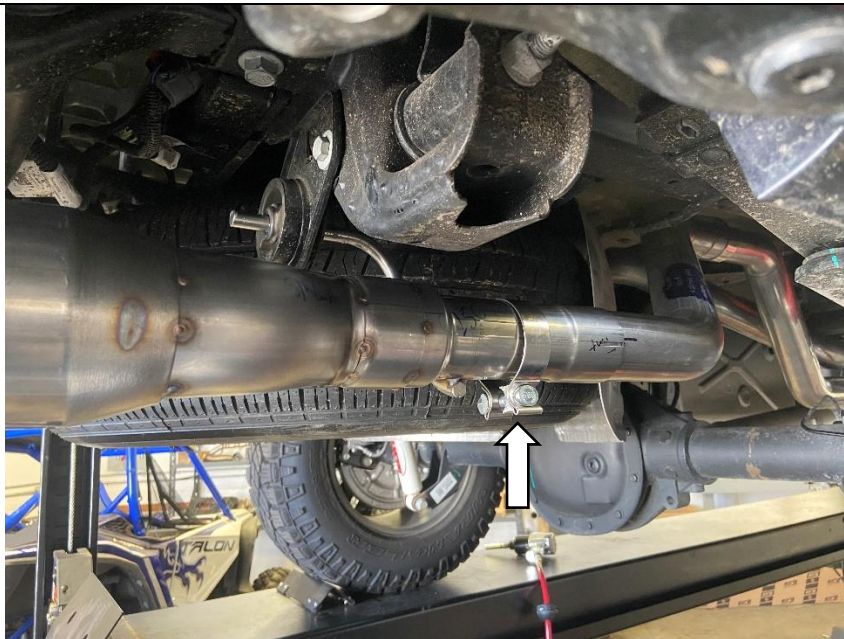
STEP 6:

SLIP A CLAMP ONTO THE RIGHT SIDE TIP AND INSERT INTO THE RUBBER ISOLATOR.



STEP 7:

CONNECT THE RIGHT SIDE TIP TO THE RIGHT SIDE TAILPIPE B AND LOOSELY SECURE WITH THE CLAMP.



STEP 8:

SLIDE A CLAMP ONTO THE LEFT TAILPIPE B AND INSTALL ONTO THE TAILPIPE A



STEP 9:

SLIP A CLAMP ONTO THE LEFT TIP, THEN SLIDE IT ONTO THE RUBBER ISOLATOR AND CONNECT TO THE LEFT TAILPIPE B. LOOSELY SECURE WITH CLAMP.

**STEP 10:**

SUPPORT THE TIPS AS YOU MAKE ALL ADJUSTMENTS TO THE SYSTEM AND TIGHTEN THE CLAMPS. OR USE A HELPER AS NEEDED TO ACHIEVE ALIGNMENT.

**STEP 11:**

ADJUST THE EXHAUST FOR PROPER ALIGNMENT. TIGHTEN BOLTS AND CLAMPS STARTING AT THE FRONT.

1. SNUG TORCA CLAMPS
2. CHECK TIP ALIGNMENT AND ADJUST AS NECESSARY
3. TORQUE TORCA CLAMPS



INSTALLATION INSTRUCTIONS:

2019+ CHEVY SILVERADO 6.2L V8, and 2019+ GMC Sierra 6.2L V8
CAT-BACK HOLESOT EXHAUST
PART # 19855, 49857

BOLT TORQUE:

TORCA BAND CLAMPS: 43 FT/LBS

WHEN INSTALLING A NEW EXHAUST SYSTEM, MAKE SURE YOUR HANDS ARE CLEAN AND FREE OF OIL. AFTER INSTALLATION, THOROUGHLY CLEAN PIPES WITH WARM SOAPY WATER AND A SOFT CLOTH. DRY WITH A CLEAN TOWEL TO REMOVE ANY RESIDUE BEFORE STARTING THE TRUCK. DO NOT USE ANYTHING ABRASIVE TO CLEAN THE PIPES.