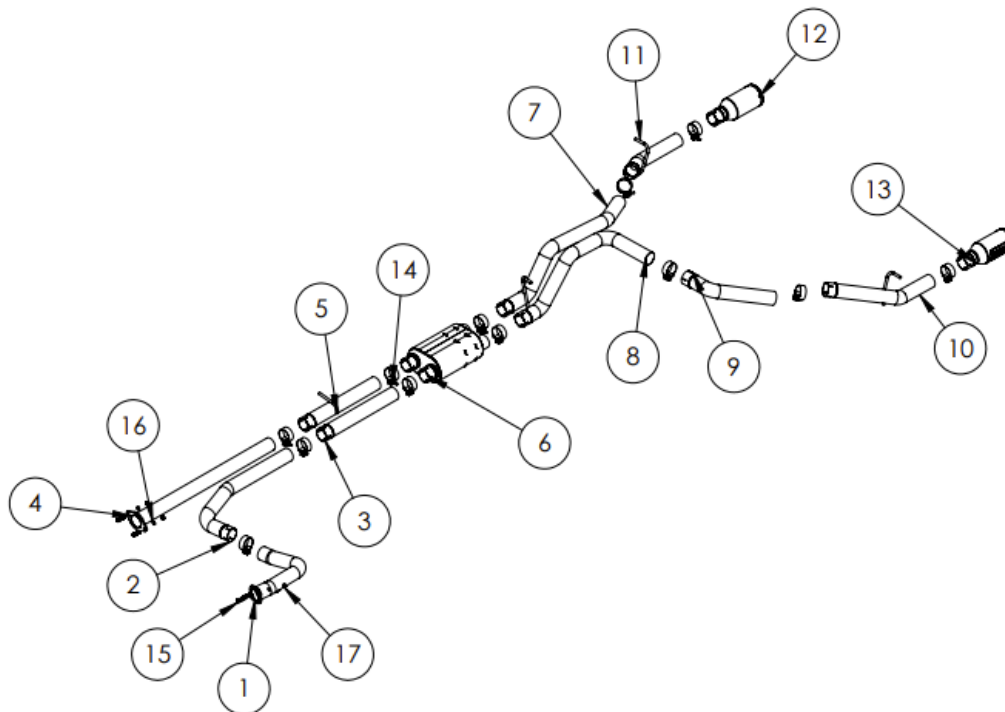




INSTALLATION INSTRUCTIONS:
2021+ RAM TRX 6.2L SUPERCHARGED
CAT-BACK HOLESHOT EXHAUST
PART # 49765

Congratulations, you have purchased the finest exhaust system available for your truck. Your Vance & Hines exhaust is designed and crafted for performance, quality, and style. Please follow the instructions below, check exhaust system for missing or damaged parts and if you need any assistance, please contact our technical support line (562) 921-7461.



ITEM #	PART #	DESCRIPTION	QTY
1	R201RB	RAM TRX LH HPA ASSEMBLY SS	1
2	R203FB	RAM TRX LH HPB SS	1
3	R205FB	RAM TRX LH HPC SS	1
4	R200FB	RAM TRX RH HPA ASSEMBLY SS	1
5	R202FB	RAM TRX HPB SS	1
6	R210FB	RAM TRX MUFFLER ASSEMBLY SS	1
7	R204RB	RAM TRX RH TPA ASSEMBLY SS	1
8	R207RB	RAM TRX LH TPA ASSEMBLY SS	1
9	R209RB	RAM TRX LH TPB SS	1
10	R211RB	RAM TRX LH TPC ASSEMBLY SS	1
11	R206RB	RAM TRX TH TPB ASSEMBLY	1
12	R212RP-S	RAM TRX ELIM RS TIP ASSEMBLY BLK	1
13	R213RP-S	RAM TRX ELIM LS TIP ASSEMBLY BLK	1
14	A965HW	TORCA 3.5 IN DIA X 1.25 BAND	12
15	A977HW	7/16-20 HEX HEAD SCREW	4
16	A976HW	7/16 SPLIT WASHER	4
17	A978HW	7/16-20 HEX NUT	4



INSTALLATION INSTRUCTIONS:
2021+ RAM TRX 6.2L SUPERCHARGED
CAT-BACK HOLESHOT EXHAUST
PART # 49765

TOOLS REQUIRED:

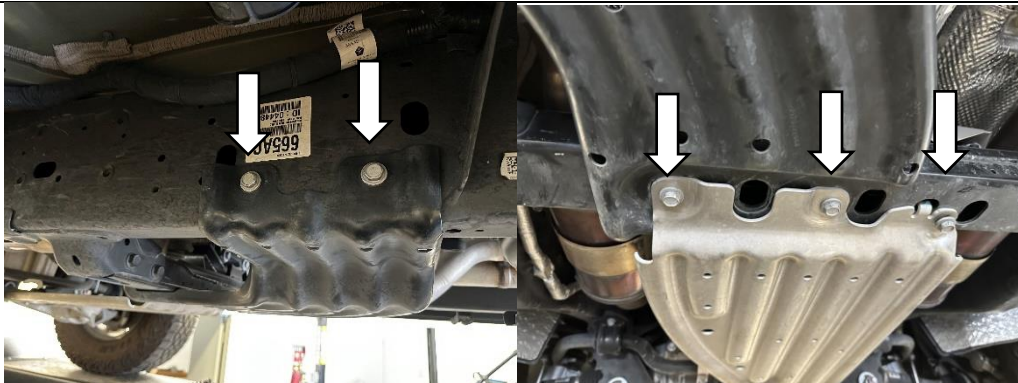
- 3/8" OR 1/2" DRIVE RATCHET
- 3/8" DRIVE TORQUE WRENCH
- 6" RATCHET EXTENSION
- 16MM DEEP SOCKET
- 12MM – 18MM SOCKET
- PRYBAR
- MUFFLER STANDS (OPTIONAL)
- SPRAY LUBRICANT (OPTIONAL)
- 1" WIDE RATCHET STRAP

WHEN INSTALLING A NEW EXHAUST SYSTEM, MAKE SURE YOUR HANDS ARE CLEAN AND FREE OF OIL. AFTER INSTALLATION, THOROUGHLY CLEAN PIPES WITH WARM SOAPY WATER AND A SOFT CLOTH. DRY WITH A CLEAN TOWEL TO REMOVE ANY RESIDUE BEFORE STARTING THE TRUCK. DO NOT USE ANYTHING ABRASIVE TO CLEAN THE PIPES.

STOCK EXHAUST REMOVAL:

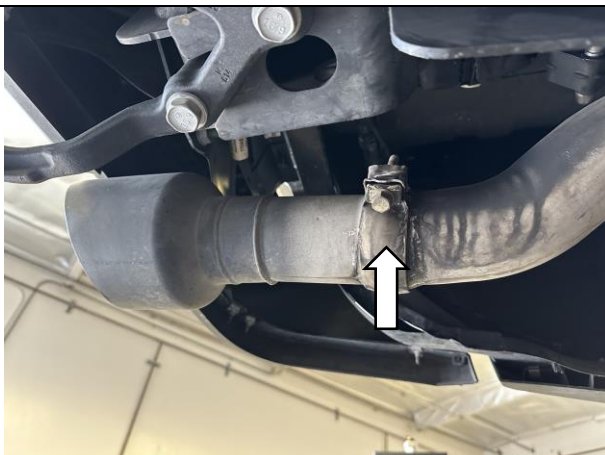
STEP 1:

REMOVE BLACK SKID PLATE, TWO BOLTS ON DRIVERS SIDE FRAME RAIL AND THREE ON SUBFRAME.



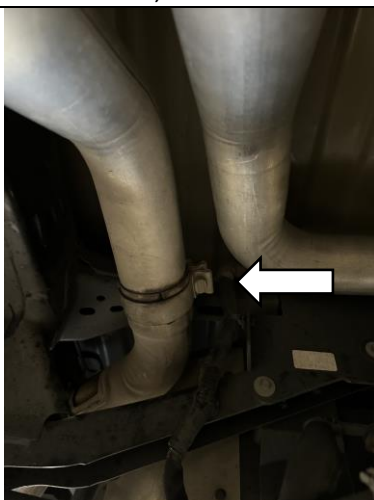
STEP 2:

LOOSEN CLAMPS ON BOTH REAR TIPS AND REMOVE.



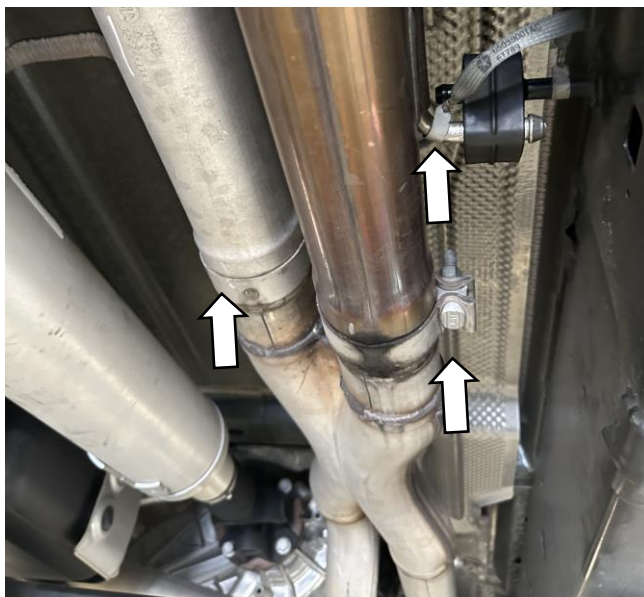
STEP 3:

LOSSEN CLAMP ON PASSENGER REAR TAILPIPE (LOCATED OVER REAR AXLE), REMOVE HANGER FROM RUBBER ISOLATOR, AND REMOVE TAILPIPE.



STEP 4:

LOOSEN THE TWO EXHAUST CLAMPS AT THE EXHAUST CROSS OVER. REMOVE THE GROUND STRAP FROM HANGER. REMOVE FRONT EXHAUST SECTION BY SLIDING FORWARD.



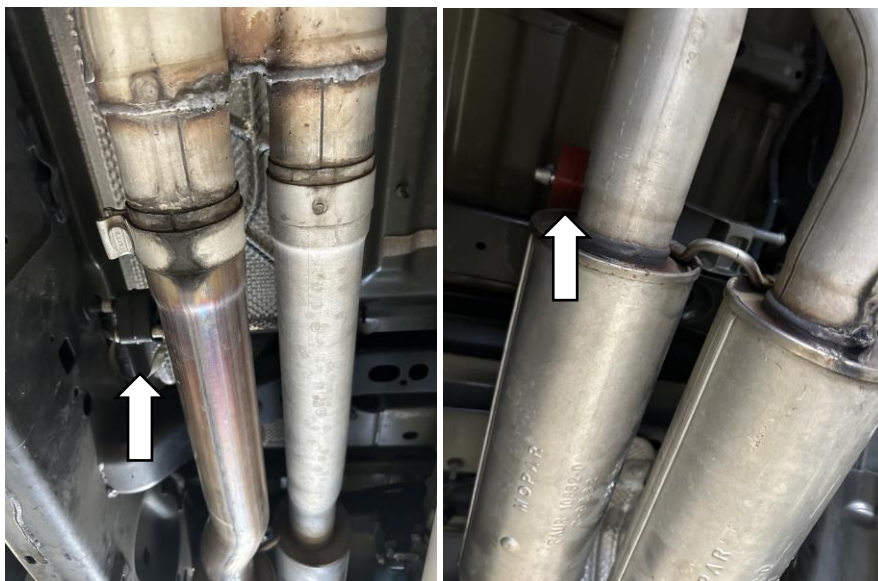
STEP 5:

TO REMOVE REMAINING EXHAUST IN ONE PIECE, REMOVE SHOCK FROM REAR DIFFERENTIAL BY REMOVING FRONT BOLT AND REAR BOLT/NUT.
(OPTION) EXHAUST MAY ALSO BE CUT IF SHOCK REMOVAL IS NOT DESIRED.



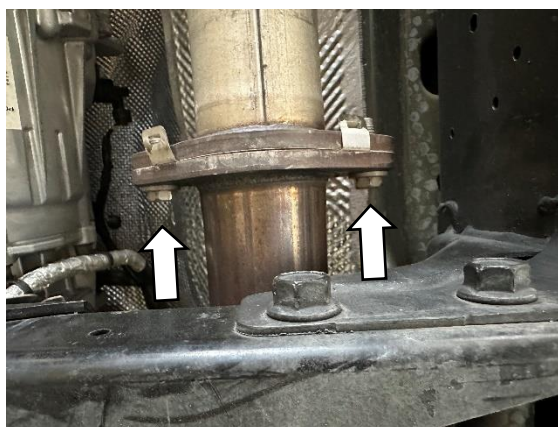
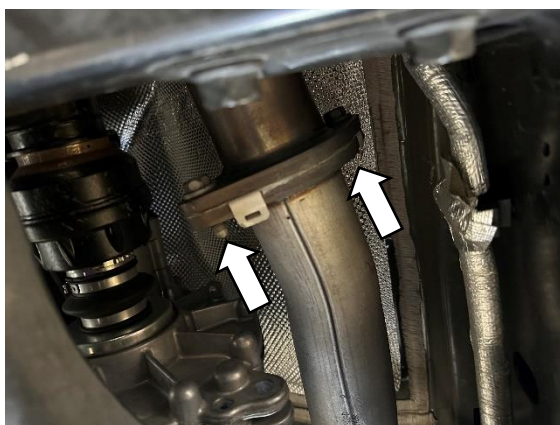
STEP 6:

REMOVE THE EXHAUST FROM THE REMAINING RUBBER ISOLATORS (3) AND SLIDE THE EXHAUST TOWARD THE FRONT OF THE TRUCK TO REMOVE.



STEP 7:

REMOVE EXHAUST FLANGE HARDWARE ON DRIVER AND PASSENGER SIDE AND REMOVE EXHAUST PIPES.



EXHAUST INSTALLATION:

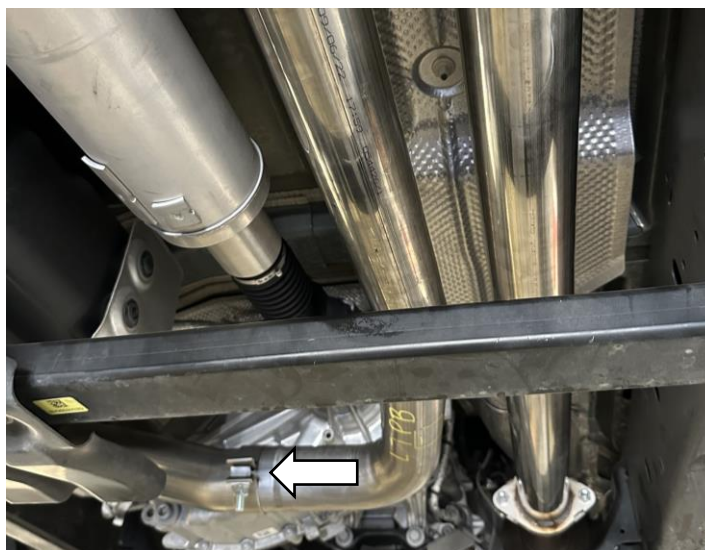
STEP 1:

REMOVE THE EXHAUST GASKETS FROM THE OEM SYSTEM AND INSTALL ONTO R200FB AND R201FB EXHAUST FLANGES. THEN INSTALL ONTO TRUCK WITH SUPPLIED HARDWARE AND SNUG THE BOLTS.



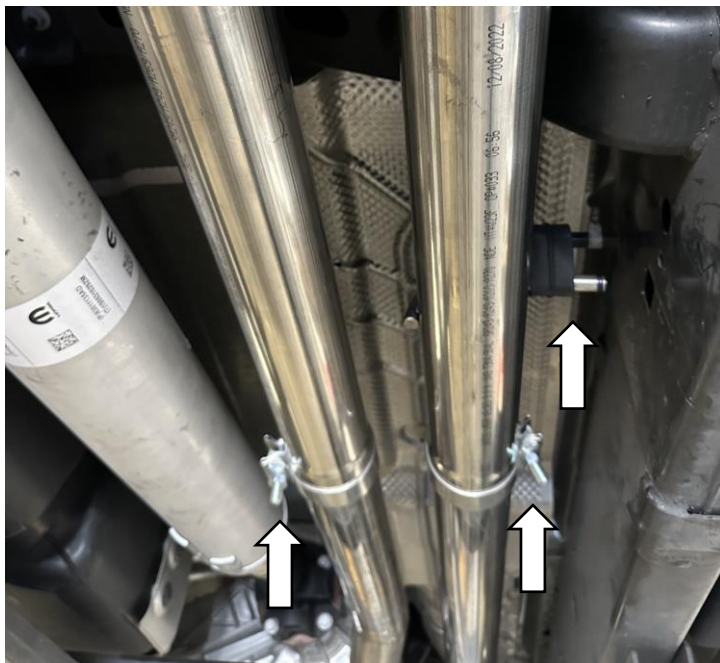
STEP 2:

SLIDE AN EXHAUST CLAMP ONTO R203FB AND INSTALL ONTO R201FB.



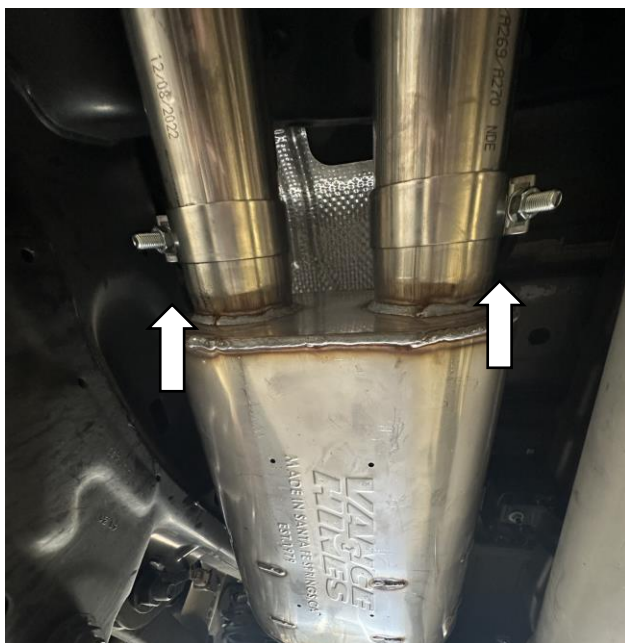
STEP 3:

SLIDE AN EXHAUST CLAMP ONTO THE R202FB PIPE, SLIP ONTO PASSENGER SIDE EXHAUST PIPE AND SLIDE HANGER INTO RUBBER GROMMET. SLIDE AN EXHAUST CLAMP ONTO THE R205FB PIPE AND SLIP ONTO DRIVER SIDE EXHAUST PIPE.



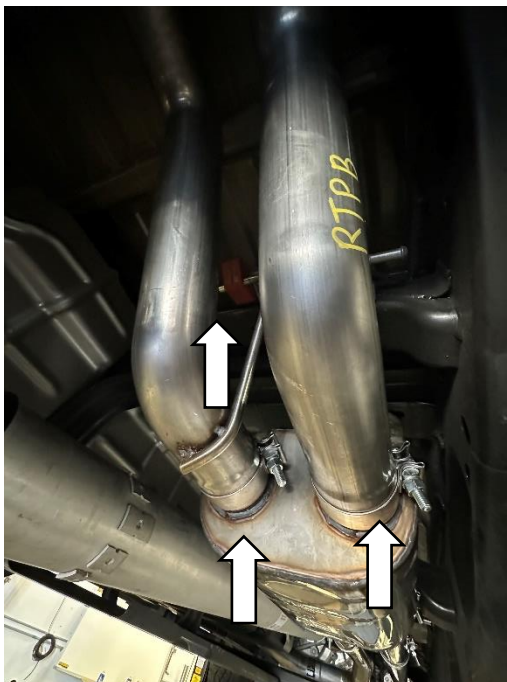
STEP 4:

SLIDE 2 CLAMPS ONTO THE MUFFLER INLETS AND SLIDE ONTO THE EXHAUST PIPES AS SHOWN WITH LOGO FACING DOWNWARD.



STEP 5:

SLIDE A CLAMP ONTO R207RB THEN SLIDE HANGER INTO RUBBER ISOLATOR AND THEN INTO MUFFLER EXIT. SLIDE A CLAMP ONTO R204RB AND THEN SLIDE ONTO MUFFLER EXIT.



STEP 6:

SLIDE A CLAMP ONTO THE R209RB THEN INSTALL ONTO R207RB TAILPIPE.



STEP 7:

SLIDE A CLAMP ONTO R211RB, SLIP ONTO R209RB TAILPIPE AND THEN SLIDE HOOK INTO THE RUBBER ISOLATOR.



STEP 8:

SLIDE A CLAMP ONTO R206RB, SLIP ONTO R204RB TAILPIPE AND THEN SLIDE HOOK INTO THE RUBBER ISOLATOR.



STEP 9:

SLIDE A CLAMP ONTO EACH EXHAUST TIP AND SLIDE ONTO THE REAR TAILPIPES. THE LOGO WILL FACE OUTBOARD ON EACH SIDE.



STEP 10:

REINSTALL SKID PLATE, REVERSE OF REMOVAL

STEP 11:

ADJUST THE EXHAUST FOR PROPER ALIGNMENT. TIGHTEN BOLTS AND CLAMPS STARTING AT THE FRONT.

1. SNUG TORCA CLAMPS
2. CHECK TIP ALIGNMENT AND ADJUST AS NECESSARY
3. TORQUE TORCA CLAMPS (SEE BOLT TORQUE, PAGE 11)

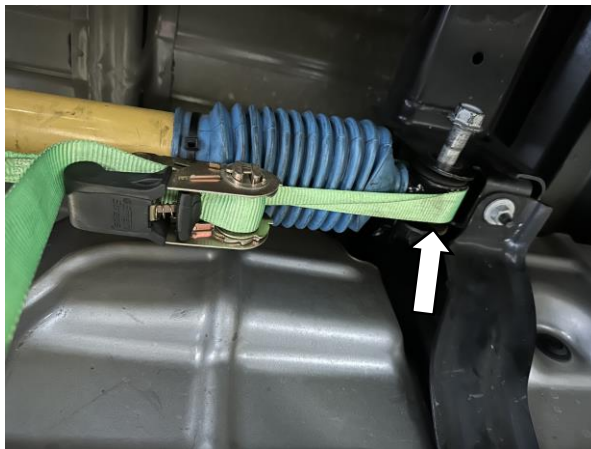
STEP 12: (IF SHOCK REMOVED)

REINSTALL REAR DIFFERENTIAL SHOCK. BEST METHOD IS TO USE A 1" WIDE RATCHET STRAP TO COMPRESS THE SHOCK. WRAP STRAP AROUND SHOCK AS SHOWN AND PUT TENSION ON SHOCK.



STEP 13: (IF SHOCK REMOVED)

INSTALL BASE OF SHOCK TO THE DIFFERENTIAL MOUNT FIRST AND INSERT BOLT AND NUT. TIGHTEN RATCHET STRAP TO COMPRESS SHOCK UNTIL THE FRONT BOLT CAN BE INSTALLED. TIGHTEN BOTH ENDS AND REMOVE STRAP.



BOLT TORQUE:

TORCA BAND CLAMPS: 43 FT/LBS

FLANGE BOLTS: 22 FT/LBS

SKID PLATE BOLTS: 41 FT/LBS

FRONT 'REAR DIFFERENTIAL' SHOCK BOLT: 122 FT/LBS

REAR 'REAR DIFFERENTIAL' SHOCK BOLT: 148 FT/LBS

WHEN INSTALLING A NEW EXHAUST SYSTEM, MAKE SURE YOUR HANDS ARE CLEAN AND FREE OF OIL. AFTER INSTALLATION, THOROUGHLY CLEAN PIPES WITH WARM SOAPY WATER AND A SOFT CLOTH. DRY WITH A CLEAN TOWEL TO REMOVE ANY RESIDUE BEFORE STARTING THE TRUCK. DO NOT USE ANYTHING ABRASIVE TO CLEAN THE PIPES.